



Exhibition brochure
KUB 07.03

Peter Zumthor
Buildings and Projects 1986 – 2007

29 | 09 | 2007 – 20 | 01 | 2008

with a film installation by Nicole Six & Paul Petritsch



Peter Zumthor

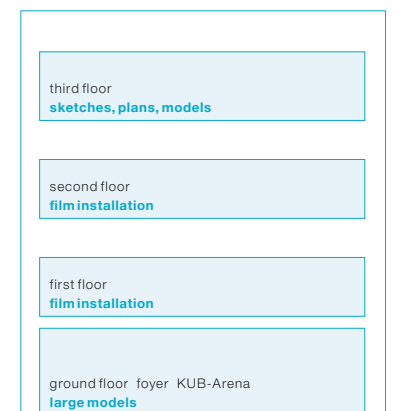
Buildings and Projects 1986 – 2007

The presentation at the KUB covers Peter Zumthor's buildings and projects from 1986 to 2007 and comprises materials on the design process, working drawings, models, and detailed plans, as well as a film installation by the artists Nicole Six and Paul Petritsch, which features almost all buildings completed during this period. Peter Zumthor and Thomas Durisch, a longtime co-worker at Atelier Zumthor and curator for this part of the exhibition, are responsible for the selection and presentation of the works on the ground floor and third level.

It was Peter Zumthor's express wish that the filmic form of cooperation between the artists become the core concept of the exhibition. Six and Petritsch were proposed because their approach is closely related to fundamental issues of architecture. The works they are known for consist of simple actions and interventions which they document on film or video and stage as installations. They realized a film installation for the exhibition "Tu Felix Austria" at the KUB in 2005. Shooting lasted six days, during which time Paul Petritsch stayed on the bare third floor of the Kunsthhaus, filmed at eye level and in real time by six stationary video cameras facing in various directions.

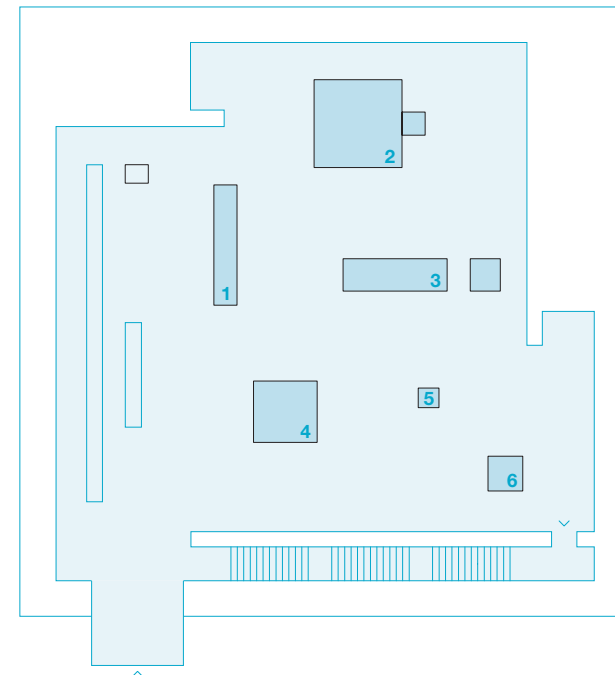
Six and Petritsch applied this stringent artistic concept in the documentation and projection of all of Zumthor's buildings. Again, six stationary cameras were used and the same distances maintained throughout. Again, there are six projection surfaces. Six and Petritsch do away with the usual camera movements, editing, and montages. Each building seems to present itself matter-of-factly on six projection surfaces for 40 real-time minutes in the changing daylight, surrounded by everyday sounds and imbedded in the landscape. What the viewer sees is tied to his movement within the room. The screenings are staggered, so that every 20 minutes a new film begins on one of the floors; thus, the viewer can experience all the buildings in four real-time hours. [Eckhard Schneider](#)

Overall layout of the exhibition





ground floor, foyer
KUB Arena



Large models

- 1 Topography of Terror, International Exhibition and Documentation Center , Berlin | 1993–2004**
- 2 Kolumba, Art Museum of the Cologne Archdiocese | 2007**
- 3 Zinc Mine Museum Almannajuvet, Sauda, Norway | 2003–**
- 4 Swiss Sound Box, Swiss Pavilion, Expo 2000 Hanover | 2000**
- 5 Kunsthaus Bregenz | 1997**
- 6 Poetic Landscape, Bad Salzflén, Germany | 1998–1999**

concept and selection: Thomas Durisch



first floor, second floor

Six screens, six projectors, six cameras

On the film installation by Nicole Six and Paul Petritsch at the Kunsthaus Bregenz

One does not actually see very much of the twelve buildings Nicole Six and Paul Petritsch filmed for the exhibition at the KUB. Six stationary cameras directed simultaneously at six points of a building for forty minutes produce a constant stream of images in which the structure appears from frequently to randomly as part of the surroundings or as the spatial setting for a particular living or recreation situation in the building's interior.

The magic of the images will come from the interaction of these six film sequences as they are simultaneously projected exactly as they were filmed onto six large screens. The screens are freestanding and face in different directions throughout the room. The projectors in the exhibition space have been set up exactly as the cameras had been while shooting the building. The directions from which the films were shot also conform to the alignment of the film projectors; the films were all shot at eye level and with normal lenses. The playback situation at the Kunsthaus therefore corresponds 1:1 with the shooting situation on location. Since one sees all six films simultaneously and experiences them together from different angles in a way that would not be possible in real life, the visual and acoustic impressions start to overlap and consolidate. The installation conveys a feeling of the presence of the buildings in their surroundings and in everyday life, a feeling of the life taking place in and around them. And that is a lot. [Peter Zumthor](#)

Film installation by Nicole Six & Paul Petritsch

- 1 Protective Housing for Roman Archaeological Excavations, Chur, Graubünden | 1986
- 2 Zumthor Studio, Haldenstein, Graubünden | 1986
- 3 Sogn Benedetg Chapel, Sumvitg, Graubünden | 1988
- 4 Homes for Senior Citizens, Chur, Masans, Graubünden | 1993
- 5 Truog House, Gugalun, Versam, Graubünden | 1994
- 6 Spittelhof Estate, Biel-Benken, Baselland | 1996
- 7 Thermal Bath Vals, Graubünden | 1996
- 8 Kunsthaus Bregenz | 1997
- 9 Luzi House, Jenaz, Graubünden | 2002
- 10 Zumthor House, Haldenstein, Graubünden | 2005
- 11 Brother Klaus Field Chapel, Wachendorf, Eifel | 2007
- 12 Kolumba, Art Museum of the Cologne Archdiocese | 2007

The documentary produced by Nicole Six and Paul Petritsch presents the twelve built projects by Peter Zumthor in the following order:
(Screening time: 40 minutes)

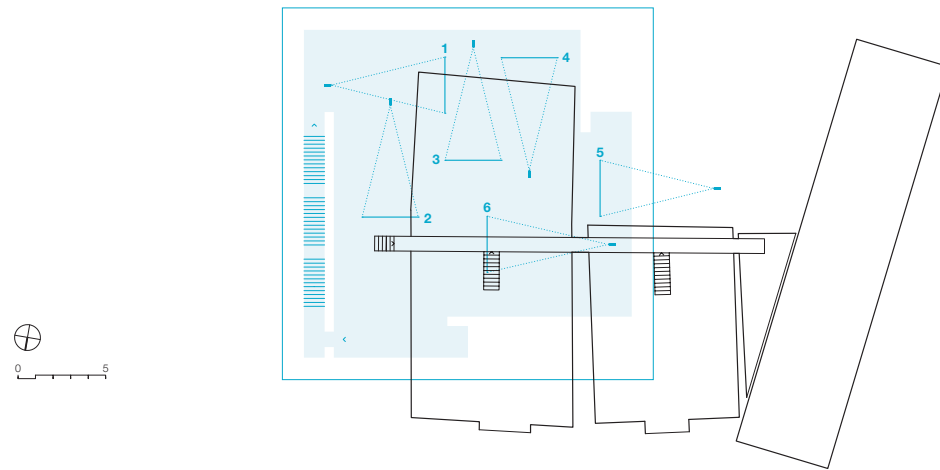
KUB opening hours Tuesday – Sunday 10 a.m. to 6 p.m.

Thursday 10 a.m. to 9 p.m.

	10 ⁰⁰	10 ⁴⁰	11 ²⁰	12 ⁰⁰	12 ⁴⁰	13 ²⁰	14 ⁰⁰	14 ⁴⁰	15 ²⁰	16 ⁰⁰	16 ⁴⁰	17 ²⁰	18 ⁰⁰	18 ⁴⁰	19 ²⁰	20 ⁰⁰	20 ⁴⁰
2nd floor	2	4	6	8	10	12	2	4	6	8	10	12	2	4	6	8	10
1st floor	1	3	5	7	9	11	1	3	5	7	9	11	1	3	5	7	9

first floor

Film installation



1 Protective Housing for Roman Archaeological Excavations | 1986

Chur, Graubünden
Filmed with six cameras on June 29, 2007,
from 12:58 to 1:38 p.m.

Projection onto six screens | 1st floor | start:
10:00 a.m., 1:40 and 5:40 p.m.

In the 4th century AD, Chur was the Roman capital of the province of Curia – hence the name “Chur”. The Romans inhabited the area now called the “Welschdörfli” (French-speaking Swiss village), Chur’s small amusement strip just off the historic town centre, where, it is said, people still spoke “Churerwelsch” though the people in town were already speaking German. Archaeological excavations in this area have uncovered a complete Roman quarter.

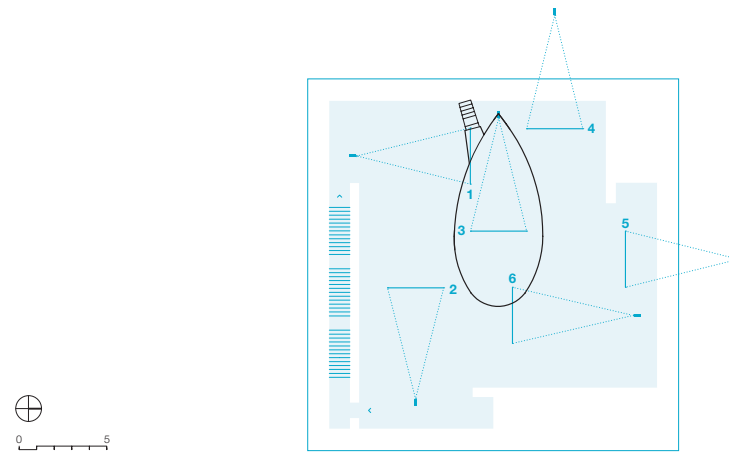
The protective structures – wind-permeable wooden enclosures – follow the outer walls

of three adjacent Roman buildings (only a small part of one of these was excavated). The site’s display cases along the street skirt the protruding foundations of the former house entrances. A wall painting was found lying on the floor of the larger building. Restored and returned to its original position, it gives an impression of the probable height of the single-storey houses.

The charred remains of a wooden floor at the back of the larger building are from Roman times. [zth](#)

first floor

Film installation



3 Sogn Benedetg Chapel | 1988

Sumvitg, Graubünden
Filmed with six cameras on April 23, 2007,
from 11:38 a.m. to 12:18 p.m.

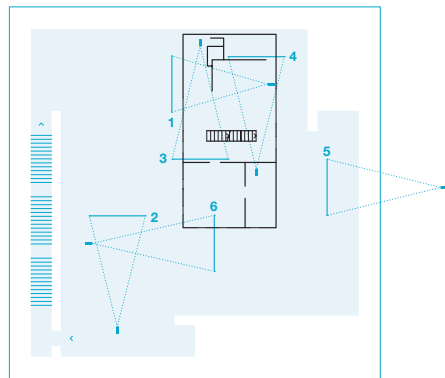
Projection onto six screens | 1st floor | start:
10:20 a.m., 2:20 and 6:20 p.m.

In 1984 an avalanche destroyed the baroque chapel in front of the village of Sogn Benedetg. A recently built parking lot had acted like a ramp pushing the snow from the avalanche up against the chapel. The new site on the original path to the Alp above the small village is protected from avalanches by a forest. The new wooden chapel,

faced with larch wood shingles, was inaugurated in 1988. The village authorities sent us the building permit with the comment “senza perschuasium” (without conviction). Yet the abbot and monks of the Disentis Monastery and the then village priest Bearth wanted to build something new and contemporary for future generations. [zth](#)

first floor

Film installation



5

Truog House | 1994

Gugalun, Versam, Graubünden

Filmed with six cameras on June 12, 2007, from 10:19 to 10:59 a.m.

Projection onto six screens | 1st floor | start: 11:00 a.m., 3:00 and 7:00 p.m.

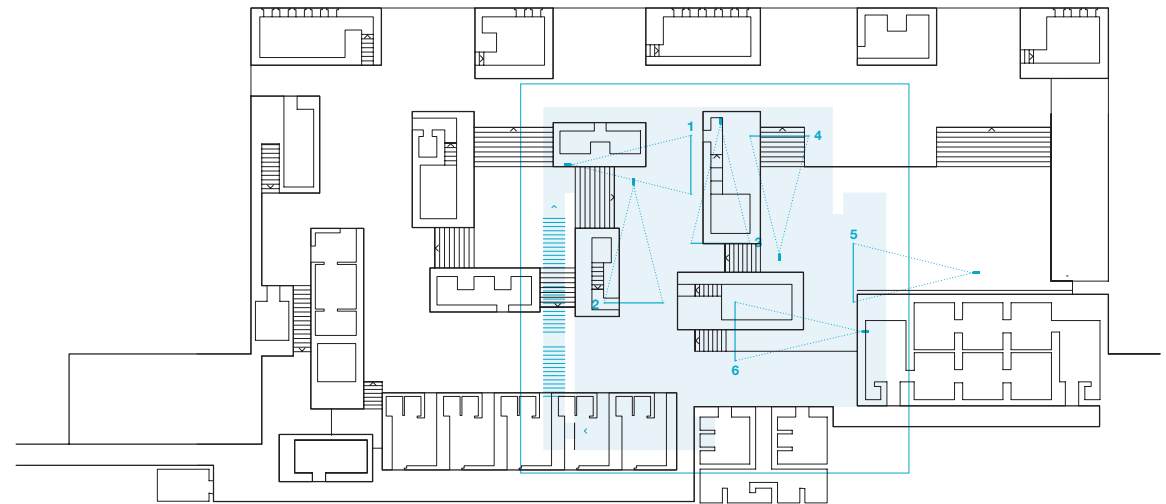
Relatives of the present owner lived in and ran the small Gugalun estate in Arezen at the entrance to the Safien Valley. The small manor house looks north, to the moon (luna), as the name of the estate indicates.

To give the simple wooden manor house a future, a new extension was built. It contains a

kitchen, bathroom and bedroom and a modern hypocaust heating system. To create the space for the annex, the late 19th-century kitchen at the back of the house, on the side of the mountain slope, was demolished, while the entire 17th-century living-room section was preserved. A new roof connects the old and the new. **zth**

first floor

Film installation



7

Thermal Bath Vals | 1996

Graubünden

Filmed with six cameras on 28. June 10, 2007, from 9:51 to 10:31 a.m.

Projection onto six screens | 1st floor | start: 11:40 a.m., 3:40 and 7:40 p.m.

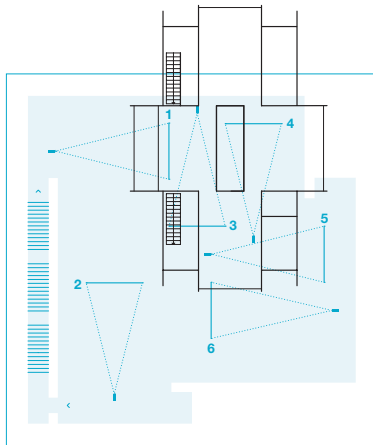
In 1983 the commune of Vals acquired the bankrupt hotel complex, built in the 1960s, for very little money, but without much enthusiasm. But something had to be done in order to rescue existing jobs. When a larger new building with integrated thermal baths and new guest rooms proved too costly, the authorities opted for the thermal baths as a first step. We were told it should be something special, unique. It should fit in with Vals and attract new guests. In 1991 the project was presented at a village meeting with a water-filled stone model.

Construction started in 1994, and the thermal baths were opened in 1996. Since then, over 140,000 people have visited them every year. Since completion, the overnight stays in the village and in the Hotel Therme have increased by about 45 per cent.

The load-bearing composite structure of the baths consists of solid walls of concrete and thin slabs of Vals gneiss broken and cut to size in the quarry just behind the village. The thermal water which comes from the mountain just behind the baths has a temperature of 30°C. **zth**

first floor

Film installation



9

Luzi House | 2002

Jenaz, Graubünden

Filmed with six cameras on June 26, 2007,
from 4:55 to 5:35 p.m.

Projection onto six screens | 1st floor | start:
12:20 p.m., 4:20 and 8:20 p.m.

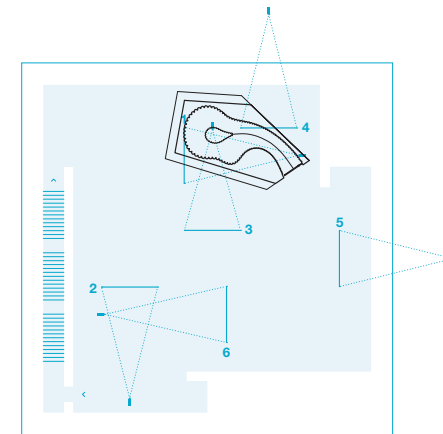
Private residence with a separate granny flat or a "Stoockli" as it is called in Switzerland. The clients: a local couple with six small children in the centre of Jenaz.

"A spacious, expansive house with light-

filled rooms, everything constructed of solid wood; a further development of the blockhouses typical of this village, without any extra frills, with large windows and large balconies full of flowers" – as the couple specified in the brief. [zth](#)

first floor

Film installation



11

Brother Klaus Field Chapel | 2007

Wachendorf, Eifel

Filmed with six cameras on July 4, 2007,
from 3:25 to 4:05 p.m.

Projection onto six screens | 1st floor | start:
1:00 and 5:00 p.m.

The field chapel dedicated to Swiss Saint Nicholas von der Flüe (1417–1487), known as Brother Klaus, was commissioned by farmer Hermann-Josef Scheidtweiler and his wife Trudel and largely constructed by them, with the help of friends, acquaintances and craftsmen on one of their fields above the village.

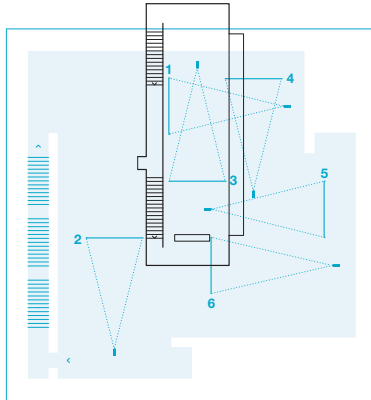
The interior of the chapel room was formed out of 112 tree trunks, which were configured like a tent. In twenty-four working days, layer after layer of concrete, each layer 50 cm thick,

was poured and rammed around the tent-like structure. In the autumn of 2006, a special smouldering fire was kept burning for three weeks inside the log tent, after which time the tree trunks were dry and could easily be removed from the concrete shell.

The chapel floor was covered with lead, which was melted on site in a crucible and manually ladled onto the floor. The bronze relief figure in the chapel is by sculptor Hans Josephsohn. [zth](#)

second floor

Film installation



2

Zumthor Studio | 1986

Haldenstein, Graubünden

Filmed with six cameras on June 24, 2007,
from 11:39 a.m. to 12:19 p.m.

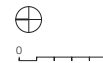
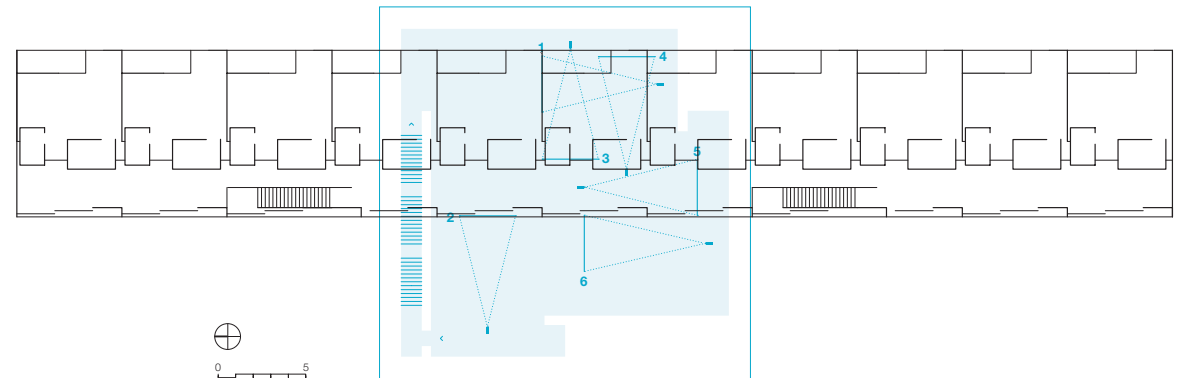
Projection onto six screens | 2nd floor | start:
10:00 a.m., 2:00 and 6:00 p.m.

In the early 1980s we were able to buy an old farmhouse with some land right next to the farmhouse in the Süsswinkel in Haldenstein which we had converted in 1971 into our family home. Unfortunately the newly acquired house received very little sunlight, having been built onto the north side of a neighbouring house. We drew up many conversion plans in order to lure the sun into the house, without much success. Finally we decided to take the leap: we pulled down the old house and replaced it with a new studio house and garden. The new wooden building – a reference to the barns, stables and workshops in the

village, and a salute to the few fellow architects in the Vorarlberg region who had begun building good new houses of wood – now occupies the northern and the garden the southern section of the site, as is proper. The studio contains two south-facing rooms: the upper one for working, the ground-floor one with a fireplace, a view of the garden and a small kitchen for entertaining. For a long time a concert piano stood there under a wall painting by Matias Spescha and, in front of the fireplace, a group of easy chairs with the sofa that Alvar Aalto designed for Wohnbedarf in Zurich. Today the room is used as a drawing studio. [zth](#)

second floor

Film installation



4

Homes for Senior Citizens | 1993

Chur, Masans, Graubünden

Filmed with six cameras on June 28, 2007,
from 10:49 to 11:29 a.m.

Projection onto six screens | 2nd floor | start:
10:40 a.m., 2:40 and 6:40 p.m.

The twenty-two flats of the residential development for the elderly in Masans near Chur are occupied by senior citizens still able to run their own households, but happy to use the services offered by the nursing home behind their own building.

Many of the residents grew up in mountain villages around the area. They have always lived in the country and feel at home with the traditional building materials used here – tuff,

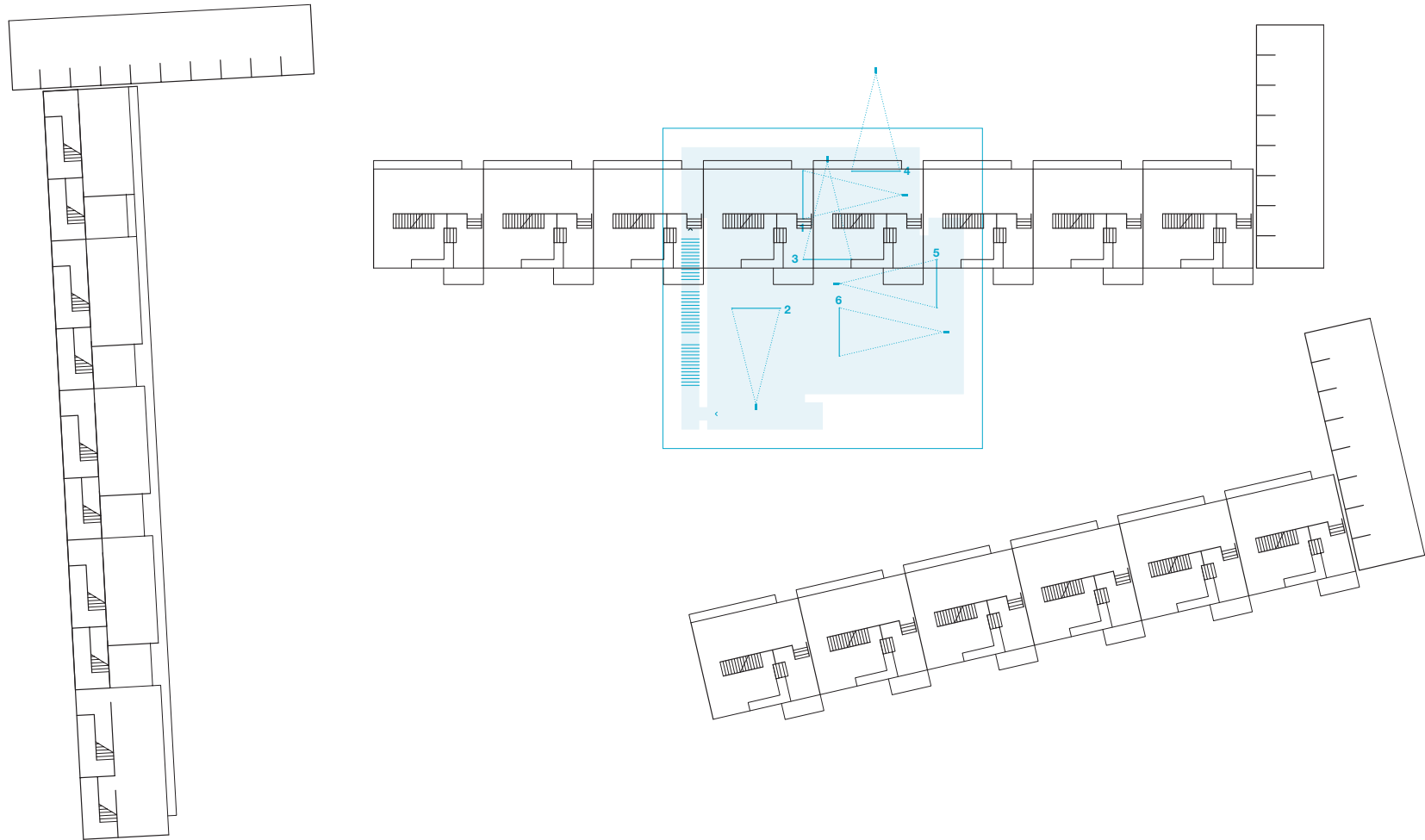
larch, pine, maple, solid wood flooring and wooden panelling.

The residents are welcome to furnish as they please their section of the large entrance porch to the east, which they overlook from their kitchen windows, and they make ample use of this opportunity. The sheltered balcony niches and the living room bow windows on the other side face west, up the valley, towards the setting sun. [zth](#)



second floor

Film installation



6

Spittelhof Estate | 1996

Biel-Benken, Baselland

Filmed with six cameras on July 3, 2007, from 9:18 to 9:58 a.m.

Projection onto six screens | 2nd floor | start: 11:20 a.m., 3:20 and 7:20 p.m.

The town of Biel-Benken near the Alsace border is a desirable residential area near Basel. People work in the city and live in the country, in a house with a garden. Building a small residential estate here, in a prime location at the upper edge of the village and below the historic Spittelhof farm, required special permission from the village council. The semi-private Basellandschaftliche Beamtenversicherungskasse (an organisation

that insures civil servants) acted as developer/ investor; their brief called for rental flats and terraced houses at a ratio of roughly 1:1. We built two rows of terraced housing with gardens on the south side and a building with rental units (which at the time we called "Kulm"/Summit) at the upper edge of the central green courtyard. The bedrooms face east towards the nearby forest, while the living rooms have a wide view to the west and the

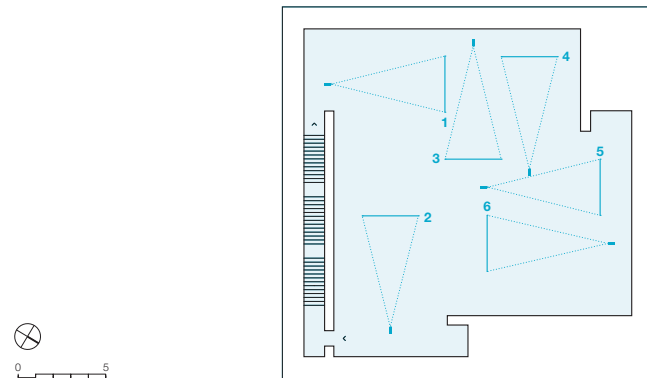
hills of the Sundgau region. The "Kulm" contains five ground-floor flats for elderly people and on the two upper floors ten flats of different sizes, all with separate access stairs and entrances from the canopied forecourt on the east side.

The floor plans of all three buildings were designed to provide light-filled living rooms and bedrooms lined up – porch-like – along the facades. [zth](#)



second floor

Film installation



8

Kunsthaus Bregenz | 1997

Filmed with six cameras on April 28, 2007,
from 7:02 to 7:42 p.m.

Projection onto six screens | 2nd floor | start:
12:00 noon, 4:00 and 8:00 p.m.

The competition brief of 1989 called for a conventional provincial gallery. Step by step, the special format of the house as a Kunsthalle evolved into a four-storey building. Administration, café and museum shop were relocated to a separate structure in front of the museum proper.

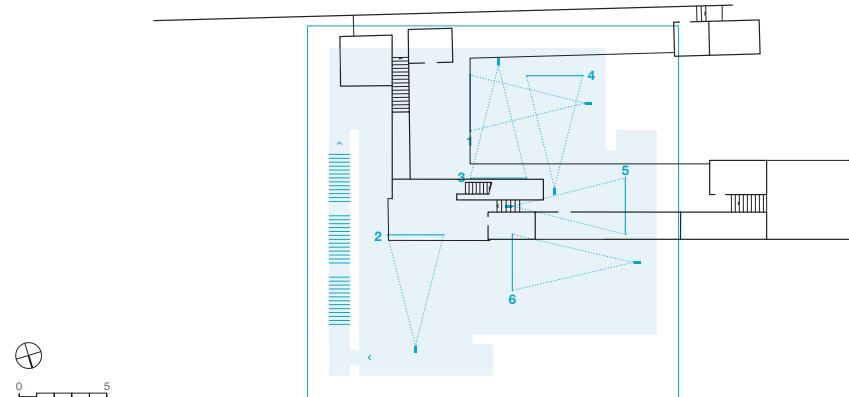
Initially we planned to direct daylight into the building through obliquely placed facade slats. Tested on models, this solution proved unsatisfactory. The best results were obtained by using etched glass shingles that refract the light before it enters the building. No matter what

direction the light is coming from, it is always transmitted horizontally into the interior. Therefore, we placed a cavity above every floor to catch the light coming in from all four sides. And now, once again, we exploited the ability of the etched glass to diffuse the light; it strikes the glass ceiling and is deflected down into each exhibition gallery.

To encourage a special form of concentration on the four stacked exhibition floors, the building was designed without windows. And yet daylight is everywhere. [zth](#)

second floor

Film installation



10

Zumthor House | 2005

Haldenstein, Graubünden

Filmed with six cameras on June 13, 2007,
from 4:25 to 5:05 p.m.

Projection onto six screens | 2nd floor | start:
12:40 p.m., 4:40 and 8:40 p.m.

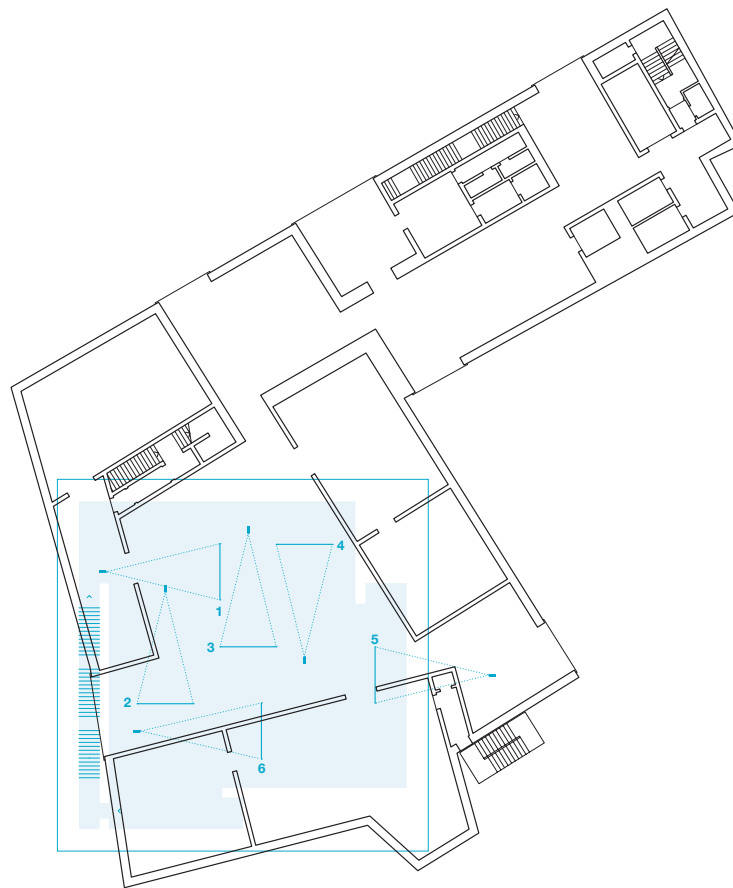
Private residence with studio suite. Living and working, family, children and grandchildren, inventing houses with younger colleagues – for me all this belongs together. That's what the house was built for. It contains a flowing sequence of spaces which, depending on the direction I take, become increasingly public

(work) or increasingly private (living). The inner life of the house revolves around a garden planted with maples. Seen from outside, it relates to the "organic" village structures, to the buildings, pastures, gardens, fences, paths and woods of ash trees on the steep embankment that drops down towards the Rhine flood plains. [zth](#)



second floor

Film installation



12

Kolumba | 2007

Art Museum of the Cologne Archdiocese

Filmed with six cameras on September 13, 2007,
from 11:50 a.m. to 12:30 p.m.

Projection onto six screens | 2nd floor | start:
1:20 and 5:20 p.m.

The Art Museum of the Cologne Archdiocese was to be a “living museum”. It shows objects from its own permanent collection ranging from late antiquity to the present: Romanesque sculptures, installations, medieval paintings, “radical paintings”, gothic ciboria and 20th-century objects of daily use are presented in changing juxtapositions.

The new building in the city centre rises from the ruins of the late gothic Saint Kolumba Church, destroyed in World War II. Its ground floor contains a large archaeological excavation site with the remains of previous church buildings which date back to the mid-1st century, and the chapel “Madonna in den Trümmern” (Madonna among the Ruins) built by Gottfried Böhm in

1949/50. These givens led to a building that provides seventeen galleries of different proportions and with different lighting on three floors with a total floor space of 1,750 m². A pale buff-coloured brick (24 x 21.5 x 4 cm) was specially produced for the new structures.

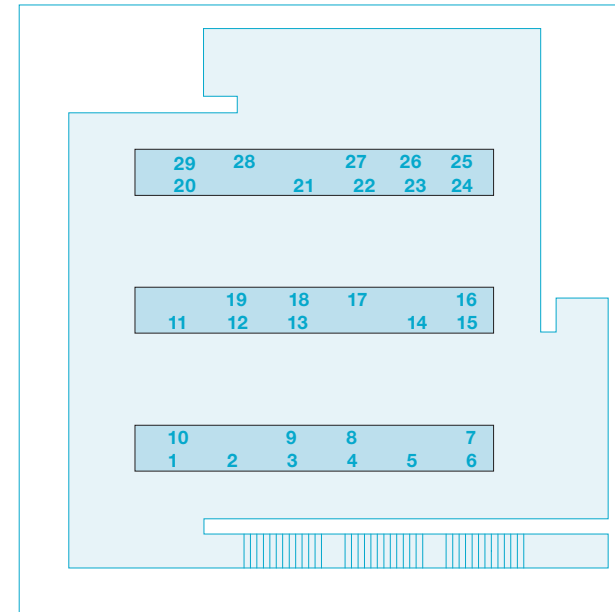
[zth](#)



Sketches, Plans, and Models

- 1 Zumthor Studio, Haldenstein, Graubünden | 1986
- 2 Protective Housing for Roman Archaeological Excavations, Chur, Graubünden | 1986
- 3 Sogn Benedetg Chapel, Sumvitg, Graubünden | 1988
- 4 Homes for Senior Citizens, Chur, Masans, Graubünden | 1993
- 5 Truog House, Gugalun, Versam, Graubünden | 1994
- 6 Spittelhof Estate, Biel-Benken, Baselland | 1996
- 7 Thermal Bath Vals, Graubünden | 1996
- 8 Herz Jesu Church, Munich | 1996
- 9 Kunsthaus Bregenz | 1997
- 10 Poetic Landscape, Bad Salzuflen, Germany | 1998 – 1999
- 11 Swiss Sound Box, Swiss Pavilion, Expo 2000, Hanover, Germany | 2000
- 12 Luzi House, Jenaz, Graubünden | 2002
- 13 Mountain Hotel Tschlin, Graubünden | 1999 – 2002
- 14 Topography of Terror, International Exhibition and Documentation Center, Berlin | 1993 – 2004
- 15 Art Gallery Hinter dem Giesshaus 1, Berlin | 2002 – 2003
- 16 Harjunkulma Apartment Building, Jyväskylä, Finland | 2001 – 2004
- 17 Pingus Winery, Valbuena de Duero, Spain | 2001 – 2005
- 18 Zumthor House, Haldenstein, Graubünden | 2005
- 19 Brother Klaus Field Chapel, Wachendorf, Eifel | 2007
- 20 Kolumba, Art Museum of the Cologne Archdiocese | 2007
- 21 Pension Briol, Extension, Barbian-Dreikirchen, Südtirol | 2001 –
- 22 Hotel Therme Vals, Graubünden | 2001 –
- 23 I Ching Gallery, Dia Center for the Arts, New York, USA | 2000 –
- 24 Annalisa Zumthor House, Vals, Leis, Graubünden | 2000 –
- 25 Residential Development, Güterareal, Lucerne | 2005 – 2006
- 26 Redevelopment of De Meelfabriek, Leiden, Netherlands | 2002 –
- 27 Summer Restaurant, Ufnau Island, Zürichsee | 2001 –
- 28 Zinc Mine Museum Almannajuvet, Sauda, Norway | 2003 –
- 29 Memorial to the Burning of Witches in the Finnmark, Vardø | 2007 –

concept and selection: Thomas Durisch





Index of Works Peter Zumthor, 1986–2007

Works shown at the Kunsthau Bregenz are in bold type.

1986

Zumthor Studio, Haldenstein, Graubünden | collaboration: Reto Schaufelbühl; structural engineering: Jürg Conzett; interior painting: Matias Spescha

Protective Housing for Roman Archaeological Excavations, Chur, Graubünden | collaboration and site management: Reto Schaufelbühl; structural engineering: Jürg Buchli

Fontana House, Fidaz, Graubünden | renovation and remodeling, collaboration and site management: Valentin Bearth

St. Valentin chapel, Vrin-Puzatsch, Graubünden | restoration, collaboration and site management: Valentin Bearth

Hotel Therme and thermal bath, Vals, Graubünden | commissioned studies for the new building | collaboration: Valentin Bearth

Arosa sports hall, Graubünden | competition design | collaboration: Valentin Bearth

Hotel Therme and thermal bath, Vals, Graubünden | project remodeling and expansion | collaboration: Andreas Hagmann, Reto Schaufelbühl

1987

"Ramona" community center, Landquart, Graubünden | competition design | collaboration: Valentin Bearth, Andreas Hagmann, Reto Schaufelbühl

Riehen garden street, Basel | urban development competition design | collaboration: Valentin Bearth, Reto Schaufelbühl

Lugano train station, Ticino | competition design | collaboration: Jürg Conzett, Andreas Hagmann, Dieter Jüngling, Reto Schaufelbühl; traffic control engineer: Peter Hartmann

Lumbrein town hall, Graubünden | renovation and remodeling | collaboration and site management: Valentin Bearth; structural engineering: Jürg Buchli

1988

Sogn Benedetg Chapel, Sumvitg, Graubünden | collaboration and site management: Valentin Bearth, Reto Schaufelbühl; Geometry: Jürg Conzett; structural engineering: Jürg Buchli; Kunst am Bau: Jean Pfaff, Gieri Schmed

House above a shop in the old quarter of Zürich | replacement building Rindermarkt 7 competition design | collaboration: Andreas Hagmann, Dieter Jüngling

1989

Multipurpose building Flond schoolhouse, Graubünden | competition design | collaboration: Andreas Hagmann, Dieter Jüngling, Marcel Liesch, Reto

Schaufelbühl holiday hotel of the Swiss Association for the Blind and Partially Sighted (SBV), Willerzell, Schwyz | competition design | collaboration: Andreas Hagmann, Dieter Jüngling, Reto Schaufelbühl

Burghalde multiple family dwelling, "Der reisende Krieger," Baden, Aargau | competition design | collaboration: Andreas Hagmann, Dieter Jüngling, Marcel Liesch, Reto Schaufelbühl

Wettingen office and commercial building, Aargau | project | collaboration: Andreas Hagmann, Claire Moore

Residential building "an der Stadtmauer," Jochstrasse, Chur, Graubünden | project | collaboration: Beate Nadler

Landquart train station area, Graubünden | design study | collaboration: Andreas Kaupp

1990

Bündner Art Museum, Chur, Graubünden | reconstruction and remodeling | collaboration and site management: Beat Müller and Zeno Vogel; structural engineering: Jürg Conzett

Schiesser House and Atelier, Chur, Graubünden | reconstruction and expansion | collaboration: Marcel Liesch, site management, and Andreas Hagmann, Dieter Jüngling

Rothorn mountain railway station and restaurant | commissioned studies "Steinway," Valbella, Graubünden

1991

Schlössli Thusis, Graubünden | design of the new kitchen | collaboration and site management: Beat Müller

St. Luzisteig weapons depot, Maienfeld, Graubünden | general concept for the integration of a new storage and maintenance building in the existing baroque fortress | collaboration: Thomas Durisch, Rolf Gerstlauer

Plan for the Cuncas area, Sils in Engadin, Graubünden | competition design | collaboration: Thomas Durisch

Plan for the Igis area, "Alte Brunnen," Landquart, Graubünden (1991–1993) | project | collaboration: Beat Müller, Annette Ruf

1992

Davos railway building, Graubünden | competition design | collaboration: Thomas Durisch

Dim Lej duplex, St. Moritz, Graubünden | project | collaboration: Thomas Durisch, Inger Molne, Bodil Reinhardtsen

1993

Homes for Senior Citizens, Chur, Masans, Graubünden | collaboration: Martin Gautschi and Bruno Haefeli, construction management, and Thomas Durisch, Rolf Gerstlauer, Inger Molne, Zeno Vogel; structural engineering: Jürg Buchli; building physics: Ferdinand Stadlin; collaboration on the competition design expansion of the existing nursing home and new apartments for the elderly: Dieter Jüngling, Andreas Hagmann, Marcel Liesch, Reto Schaufelbühl

Topography of Terror, International Exhibition and Documentation Center, Berlin (1993–2004) | construction started in 1997 was discontinued by the state of Berlin in 2004 | collaboration: Rainer Weitschies, project director, and Gordian Blumenthal, Thomas Durisch, Maurus Frei, Marlene Gujan; structural engineering: Jürg Buchli and Herbert Fink; site management: Büro am Lützplatz, Kraft, Scheele und Partner; building physics: Ferdinand Stadlin; HVAC and plumbing: Meierhans und Partner; collaboration on the competition design: Jürg Bumann, Thomas Durisch

1994

Trug House, Gugalun, Versam, Graubünden | expansion and remodeling | collaboration and site management: Beat Müller and Zeno Vogel; structural engineering: Jürg Conzett

Multiple family house at the edge of town, Jenins, Graubünden | project | collaboration: Bodil Reinhardtsen

1995

Residential houses with ateliers on Krattenturmstrasse, Zürich | project studies | collaboration: Thomas Kämpfer

Swiss embassy, Berlin | remodeling and expansion | commissioned studies collaboration: Daniel Bosshard, Jürg Bumann, Thomas Kämpfer, Rainer Weitschies

Lindau Casino, Lake Constance, Germany | competition design | collaboration: Jürg Bumann, Maurus Frei, Marlene Gujan, Thomas Kämpfer, Beat Müller, Rainer Weitschies

European Academy Bolzano, Italy | competition design | collaboration: Maurus Frei, Marlene Gujan, Beat Müller

1996

Spittelhof Estate, Biel-Benken, Baselland | collaboration: Jürg Bumann, project director, and Thomas Durisch, Marion Klein, Marc Löliger; structural engineering: collective of engineers Affentranger und Müller and Jürg Buchli

Thermal Bath Vals, Graubünden | collaboration: Marc Löliger, project director, and Thomas Durisch, Rainer Weitschies; structural engineering: collective of engineers Jürg Buchli and Casanova und Blumenthal; site management: Franz Bärtsch; building physics: Ferdinand Stadlin; HVAC and plumbing: Meierhans und Partner; hydro-engineering: Schneider Aquatec AG; sound installation: Fritz Hauser

Herz Jesu Church, Munich | competition design | collaboration: Miguel Kreisler and Hannele Grönlund, liturgical consulting: Daniel Schönbacher

Lothar-Günther-Buchheim Museum, Feldafing, Germany | competition design | collaboration: Miguel Kreisler

Markthalle Färberplatz, Aarau, Aargau | competition design | collaboration: Miguel Kreisler

1997

Kunsthau Bregenz | collaboration: Daniel Bosshard, project direction of the museum building, and Jürg Bumann, Roswitha Büsser, Katja Dambacher, Thomas Durisch, Marlene Gujan; Thomas Kämpfer, project direction of the administration building; structural engineering: Robert Manahl; site management: Siegfried Wäger, Martin Zerlauth; HVAC and plumbing: Meierhans und Partner; daylight engineering: Hanns Freymuth; collaboration on the competition design: Dieter Jüngling, Andreas Hagmann, Reto Schaufelbühl

Villa in Küsnacht at Lake Zürich | project collaboration: Meritxell Vaquer i Fernández

Laban Centre for Movement and Dance, London | competition design in cooperation with Hannele Grönlund, collaboration: Meritxell Vaquer i Fernández

1998

Poetic Landscape, Bad Salzuffen, Germany (1998–1999) | project | collaboration: Miguel Kreisler and Hannele Grönlund

1999

Hotel Therme Vals, Graubünden, Remodeling and Renovation Work (1999–) | Blue Hall, Red Restaurant, "Temporaries," "Selva Stucco" rooms, Therme Shop, Selva House, Zervreila House | collaboration: Rainer Weitschies and Rosinda Casais, Sophie Frank, Frank Furrer, Stephan Hausheer, Ruben Jodar, Miguel Kreisler, Pavlina Lucas, Guy Muntwyler, Myriam Sterling, Michele Vassella, Gaele Verrier

Mountain Hotel Tschlin, Graubünden

(1999–2002) | competition design | collaboration: Michael Hemmi, Miguel Kreisler and Pavlina Lucas, Rainer Weitschies

2000

Swiss Sound Box, Swiss Pavilion, Expo 2000 Hanover | collaboration: Rainer Weitschies, project director, and Uta J. Graff, Kirsli Leiman, Daniel Schmid; manager for expenses and appointments: Franz Bärtsch; structural engineering: Conzett, Bronzini, Gartmann, Bauingenieur; curator word: Plinio Bachmann; curator sound: Daniel Ott; curator gastronomy: Max Rigendinger; stage consulting: Karoline Gruber; curator sound box cladding: Ida Gut; collaboration on the competition design: Daniel Bosshard; communication: Lars Müller; journalist and author: Peter Rüedi; film realization: Christoph Schaub

I Ching Gallery, DIA Center for the Arts, New York, USA (2000–) | project |

collaboration: Frank Furrer, Miguel Kreisler, Pavlina Lucas, Rainer Weitschies, artwork: 360° I Ching / 64 sculptures, Walter de Maria; HVAC and plumbing: Ingenieurbüro Gerhard Kahler; structural engineering: Jürg Conzett; daylight engineering: Institut für Tageslicht-technik Stuttgart

Annalisa Zumthor House, Vals, Leis, Graubünden (2000–) | project | collaboration: Lisa Barucco, Rosa Gonçalves, Michael Hemmi, Simon Mahringer

Cornell University Architecture Design Competition, Department of Architecture (2000–2001) | competition design | collaboration: Pavlina Lucas and Mark Darlington, Reto Egloff, Michael Hemmi, Stephan Meier, Rainer Weitschies

2001

Pension Briol, Extension, Barbian-Dreikirchen, (2001–) | project | collaboration: Lisa Barucco, Frank Furrer, Rosa Gonçalves, Stephan Hausheer, Michael Hemmi, Simon Mahringer, Rainer Weitschies

Hotel Therme Vals, Graubünden (2001–) | project new buildings | collaboration: Rainer Weitschies, project director, and Guy Muntwyler, Barbara Söldner, Gaele Terrier

Harjunkulma Apartment Building

Jyväskylä, Finland (2001–2004) | project | collaboration: Ivan Beer, Rainer Weitschies and Pekka Pakkanen, Csaba Tarsoly, Frank Furrer

JP Williams, Residence in Bedford, New York, USA (2001–2004) | project | collaboration: Pavlina Lucas

Pingus Winery, Valbuena de Duero, Spain (2001–2005) | project | collaboration: Miguel Kreisler, Pekka Pakkanen, Ruben Jodar, structural engineering: Jürg Conzett

2002

Luzi House, Jenaz, Graubünden | collaboration: Michael Hemmi, project director; structural engineering: Jürg Conzett

Redevelopment of De Meelfabriek, Leiden, Holland (2002–) | collaboration: Rainer Weitschies, project director, Frank Furrer, Ivan Beer and Niels Lotferd, Julian v. d. Schulenburg, Csaba Tarsoly

Kunstgalerie Hinter dem Giesshaus 1,

Berlin (2002–2003) | competition design | collaboration: Pavlina Lucas and Ruben Jodar, Benedikt Redmann, Csaba Tarsoly, Rainer Weitschies

2003

Zinc Mine Museum Almannajuvet, Sauda, Norway (2003–) | project | collaboration: Lisa Barucco, Niels Lotferd, Simon Mahringer, Rainer Weitschies; structural engineering: Finn-Erik Nielson

Summer Restaurant, Ufnau Island,

Norwich (2003–) | project | collaboration: Rainer Weitschies, Stephan Hausheer, project director, and Guy Muntwyler; structural engineering: Jürg Conzett; gastronomy consultant: Max Rigendinger

Learning Center and Landscape Parc, Gut Aabach, Risch, Zug (2003–) | project | collaboration: Rainer Weitschies, project director, Frank Furrer and Julian v. d. Schulenburg; landscaping: Vogt Landschaftsarchitekten

2005

Zumthor House, Haldenstein, Graubünden | collaboration: Michael Hemmi and Michele Vassella, project directors, and Stephan Hausheer, Csaba Tarsoly; site management: Franz Bärtsch; structural engineering: Jürg Conzett

Residential Development, Güterareal, Lucerne (2005–2006) | competition design | collaboration: Guy Muntwyler, Katrien Vertenten and Mirco Elser, Frank Furrer, Rosa Gonçalves, Stephan Hausheer, Clemens Nuyken, Gian Salis, Serge Schoemaker, Rainer Weitschies; structural engineering: Jürg Conzett; landscaping: Vogt Landschaftsarchitekten

2006

Schwarz House, residential home, Chur, Graubünden | collaboration: Stephan Hausheer, Michael Hemmi, Pavlina Lucas, Michele Vassella, Rainer Weitschies; site management: Franz Bärtsch; structural engineering: Jürg Conzett

Bath House Gut Aabach, Risch, Zug | collaboration: Rainer Weitschies, project director, Frank Furrer, Gian Salis, site management, Mirco Elser, Michele Vassella, Simon Mahringer

Zumthor Vacation Home, Vals, Leis, Graubünden (2006–) | project | collaboration: Lisa Barucco, Simon Mahringer

2007

Brother Klaus Field Chapel, Wachendorf, Eifel | collaboration: Rainer Weitschies and Frank Furrer, Rosa Gonçalves, Michael Hemmi, Ruben Jodar, Niels Lotferd, Pavlina Lucas; bronze statue: Hans Josephsohn

Kolumba, Art Museum of the Cologne Archdiocese | collaboration: Rainer Weitschies, project director; Mark Darlington, Stephan Meier, Daniel Schmid, Serge Schoemaker, and Mirco Elser, Rosa Gonçalves, Stephan Hausheer, Oliver Krell, Simon Mahringer, Guy Muntwyler, Clemens Nuyken, Gian Salis; structural engineering: collective of engineers Jürg Buchli and Schwab & Partner; HVAC and plumbing: Ingenieurbüro Gerhard Kahler; building physics: Ferdinand Stadlin; planning of the courtyard and surroundings: Peter Zumthor with Günther Vogt; collaboration on the competition design: Daniel Bosshard; copper plate printing: Peter Kneubühler

Memorial to the Burning of Witches in the Finnmark, Vardo (2007–) | project | collaboration: Lisa Barucco, Simon Mahringer; art installation by Louise Bourgeois

Project lists and texts by Peter Zumthor

Dorfplatz Vrin. Vorschläge zur Pflege und Sanierung der historischen Bausubstanz, Haldenstein: Peter Zumthor, 1981 (out of print)

Siedlungs-Inventarisierung in Graubünden. Aufgabenstellung und Methode des Bündner Siedlungsinventares. Mit Inventar Castasegna, Chur: Kantonale Denkmalpflege Graubünden, 1981 (out of print)

Eine Anschauung der Dinge. Über die Sprache der Architektur, Haldenstein: Peter Zumthor, 1992 (out of print)

Kunsthhaus Bregenz – Versuch, einen noch nicht abgeschlossenen Entwurf einmal mehr zu Ende zu denken, in: Kunst im Bau, Kunst- und Ausstellungshalle der Bundesrepublik Deutschland, Schriftenreihe Forum, Band 1, Göttingen: Steidl, 1994, p. 106 – 111

Häuser für Gedichte, in: Raum für Sprache – Raum für Literatur. Texte zur IX. Literaturbegegnung, mit 14 Fotografien von Ines Kreisler, hrsg. von Brigitte Labs-Ehlert, Detmold: Literaturbüro Ostwestfalen-Lippe, 2001

Architektur denken, Basel/Boston/Berlin: Birkhäuser, 2., erw. Aufl., 2006, (1. Aufl. Baden: Lars Müller, 1998) [DE]

Thinking architecture, Basel/Boston/Berlin: Birkhäuser, 2nd, expand. ed., 2006, (1. Aufl. Baden: Lars Müller, 1998) [EN]

Penser l'architecture, Basel/Boston/Berlin: Birkhäuser, 2007 [FR]

Pensar la arquitectura, Barcelona: G. Gili, 2005 [ES]

Pensar a arquitetura, Barcelona: G. Gili, 2005 [PT]

Pensare architettura, Milano: Electa, 2003 [IT]

Misiti arhitekturu, Zagreb: AGM, 2003 [HR]

Körper und Bild, in: Konersmann, Ralf; Noever, Peter; Zumthor, Peter: Zwischen Bild und Realität, Architekturvorträge der ETH Zürich, Zürich: GTA Verlag, 2006, Heft 2, p. 58 – 74. [Überarb. Fassung eines Vortrages, gehalten am 21.6.2005]

Atmosphären. Architektonische Umgebungen – Die Dinge um mich herum, Basel/Boston/Berlin: Birkhäuser, 2006 [DE]

Atmospheres. Architectural environments – Surrounding objects, Basel/Boston/Berlin: Birkhäuser, 2006 [EN]

Atmósferas. Entornos arquitectónicos – Las cosas a mi alrededor, Barcelona: G. Gili, 2006 [ES]

Atmosferas. Entornos arquitectónicos – As coisas que me rodeiam, Barcelona: G. Gili, 2006 [PT]

Atmosfera, Milano: Electa, 2007 [IT]

Atmosphères, Basel/Boston/Berlin: Birkhäuser, 2008 [FR]

Monographs and exhibition catalogues about Peter Zumthor and his work

Partituren und Bilder. Architektonische Arbeiten aus dem Atelier Peter Zumthor 1985 – 1988. [Ausstellung, Architekturgalerie Luzern, 2. – 23. Oktober 1988; Haus der Architektur Graz, 27. Juli – 18. August 1989], Luzern: Architekturgalerie, 2., unveränd. Aufl. 1994 (out of print); 1. Aufl. Luzern: Architekturgalerie, 1988

Stabwerk. Peter Zumthor. Internationales Besucher- und Dokumentationszentrum Topographie des Terrors, Berlin, Ausstellungskatalog Aedes Galerie und Architekturforum Berlin, 1995/96, Berlin: Aedes, 1995

Peter Zumthor, a+u. Architecture and Urbanism (Tokyo), 1998, No. 2 (Extra Edition) (out of print)

Drei Konzepte. Peter Zumthor. Ausstellungskatalog Architekturgalerie Luzern, 28. September – 2. November 1997, Basel/Boston/Berlin: Birkhäuser, 1997 [DE]

Three concepts. Peter Zumthor. Catalog of the exhibition Architekturgalerie Luzern, September 28th to November 2nd, 1997, Basel/Boston/Berlin: Birkhäuser, 1997 [EN] (out of print)

Kunsthhaus Bregenz. Texte von Peter Zumthor und Friedrich Achleitner, Fotos von Hélène Binet, Kunsthhaus Bregenz, Archiv Kunst Architektur, Werkdokumente, Stuttgart: Hatje, 1997

Peter Zumthor Häuser 1979–1997, Fotografien von Hélène Binet, Basel/Boston/Berlin: Birkhäuser, 2. Aufl., 1999 [DE] (out of print)

(1. Aufl. Baden: Lars Müller, 1998)

Peter Zumthor Works. Buildings and Projects 1979 – 1997, Photographs by Hélène Binet, Basel/Boston/Berlin: Birkhäuser, 2. Aufl., 1999 [EN] (out of print)

(1. Aufl. Baden: Lars Müller, 1998)

Poetische Landschaft – II. Druck – Faltsbuch – zur Poetischen Landschaft. Die Orte der Gedichte, Februar 1999, Brigitte Labs-Ehlert und Peter Zumthor (Hg.), Detmold: Literaturbüro Ostwestfalen-Lippe, 1999 (out of print)

Klangkörperbuch. Lexikon zum Pavillon der Schweizerischen Eidgenossenschaft an der Expo in Hannover, Peter Zumthor mit Plinio Bachmann [et al.], hrsg. von Roderick Höning, Basel/Boston/Berlin: Birkhäuser, 2000 [DE]

Swiss sound box. A handbook for the pavilion of the Swiss Confederation at Expo 2000 in Hannover, Peter Zumthor with Plinio Bachmann [et al.], ed. by Roderick Höning, Basel/Boston/Berlin: Birkhäuser, 2000 [EN]

Corps sonore Suisse. Lexique du pavillon de la Confédération helvétique pour l'Expo 2000 à Hanovre, Peter Zumthor avec Plinio Bachmann [et al.], éd. par Roderick Höning, Basel/Boston/Berlin: Birkhäuser, 2000 [FR]

Peter Zumthor. Therme Vals, Zürich: Scheidegger & Spiess, 2007. [DE]

Peter Zumthor. Therme Vals, Zürich: Scheidegger & Spiess, 2007. [EN]

Peter Zumthor. Therme Vals, Gollions: Infolio éditions, 2007 [FR]

Interviews with Peter Zumthor

Das Fremde und das Eigene – ein Gespräch, (Irma Nosedá und Peter Zumthor), in: archithese 16, 1986, No. 6, p. 7 – 10

»Soy un carpintero que dice la verdad«, (Anatxu Zabalbeascoa und Peter Zumthor), in El País, 28.11.1998, Babelia, p. 19

Das Museum als Lichtkörper. Gespräch mit Peter Zumthor zum Kunsthhaus Bregenz, in: Mack, Gerhard: Kunstmuseen: auf dem Weg ins 21. Jahrhundert, Basel/Berlin/Boston: Birkhäuser, 1999, p. 98 – 107

Schutzbauten des Widerstands, (Hanno Rauterberg und Peter Zumthor), in: Die Zeit, 31.10.2001, No. 45, p. 47

Place, authorship and the concrete, three conversations with Peter Zumthor, (Steven Spear), in: arq/architectural research quarterly 5, 2001, No. 1, p. 15 – 36

Orte der Wahrnehmung. Isabel Mundry und Peter Zumthor im Gespräch mit Patrick Müller, in: Mundry, Isabel, Goebbels, Heiner (Hg.): Composers in residence. Lucerne Festival, Sommer 2003, Frankfurt a.M.: Stroemfeld, 2003, p. 48 – 63

»Dann arbeite ich eben bis achtzig«, (Erica Schmid und Peter Zumthor), in: Zeitlupe, 2003, No. 7/8, p. 18 – 21

Conversazioni con Peter Zumthor, (Barbara Stec und Peter Zumthor), in: Casabella 68, 2004, No. 719, p. 6 – 13

»Meine Häuser sind eine Liebeserklärung an den Ort«, (Peter Krebs und Peter Zumthor), in: Via, SBB, No. 7, 2005, p. 18 – 21

Costruire la memoria. Conversazione con Peter Zumthor, in: Casabella 69, 2005, No. 728/729, p. 72 – 81

Bibliography compiled by Margrit Contesse-Truog

Peter Zumthor Curriculum Vitae

Born in Basel in 1943, trained as a cabinetmaker, designer, and architect at the Kunstgewerbeschule Basel and Pratt Institute, New York. Since 1979 own practice in Haldenstein, Switzerland. Professor at the Accademia di architettura, Università della Svizzera italiana.

Awards

1996 Erich Schelling Preis für Architektur, Karlsruhe
1998 Carlsberg Architectural Prize, Copenhagen
1999 Mies van der Rohe Award for European Architecture, Barcelona
1999 Grosser Preis für Alpine Architektur, Sexten Kultur
2003 Dottore Ad Honorem in architettura, Università degli Studi di Ferrara, Italy
2006 Thomas Jefferson Foundation Medal in Architecture, University of Virginia
2006 Spirit of Nature Wood Architecture Award, Finland
2006 Prix Meret Oppenheim; Federal Office of Culture, 2006

**Kunsthau**s** Bregenz**

Kunsthaus** Bregenz**
Karl-Tizian-Platz
A-6900 Bregenz
Phone (+43-6574) 4 85 94-0
Fax (+43-6574) 4 85 94-408
kub@kunsthau**s**-bregenz.at
www.kunsthau**s**-bregenz.at

opening hours

Tuesday – Sunday 10 a.m. – 6 p.m.
Thursday 10 a.m. – 9 p.m.

24 | 12 | 07 10 a.m. – 2 p.m.
25 | 12 | 07 closed
26 | 12 | 07 10 a.m. – 6 p.m.
31 | 12 | 07 10 a.m. – 2 p.m.
01 | 01 | 08 2 p.m. – 6 p.m.

information and registration**for guided tours**

Beatrice Nussbichler, ext. -418
b.nussbichler@kunsthau**s**-bregenz.at
Kirsten Helfrich, ext. -415
k.helfrich@kunsthau**s**-bregenz.at

office

Margit Müller-Schwab, ext. -409
m.mueller-schwab@
kunsthau**s**-bregenz.at

exhibition**concept and selection
for foyer and third level**

Thomas Durisch
**film installation on
Peter Zumthor's buildings**
Nicole Six und Paul Petritsch
camera and editing
Robert Schabus

copyright

© 2007 by Kunsthau**s** Bregenz

concept

Eckhard Schneider

text

Eckhard Schneider |
Peter Zumthor

copy editors

Kimi Lum |
Catherine Schelbert (Zumthor texts)

basic graphic design

Clemens Theobert Schedler
Büro für konkrete Gestaltung

graphic design

Bernd Altenried | Stefan Gassner

printed by

Druckerei Höfle

special thanks to

Peter Zumthor | Thomas Durisch |
Nicole Six | Paul Petritsch |
model construction Michael Rast |
restoration Johannes Weiss |
project secretary and model construc-
tion Büro Zumthor; Rosa Gonçalves
with Bettina Lareida | Astrid Sonder |
Lisa Barucco | Ruben Jodar |
Nina Mampel | Florian van het
Hekke | Vipavee Kunavichayanont |
Bernardo Lopes

**for their support during shooting
thanks to**

Gabriela Ackermann | Frieda Băni |
Monika Bartholomé | Benjamin Bärtsch |
Roland Baldauf | Katharina und Luis
Balzer | Stefan Bernard | Ulf Bladt |
Alexandra und Daniela Blumenthal |
Margit und Theo Bucher | Bruno Caduff |
Christina Cantieni | Helder Coelho dos
Santos | Antonio Conles Costa | Pierre
Crevoisier | Aline Denier | Margrit
Derungs | Ruben Do Carmo | Christoph
Dünser | Klaus Eckart | Urs und Claudine
Fries-Hobi | Olivia Gadiant | Joanna
Goldys | Rosa Gonçalves | Stefanie
Gräber | Erwin und Theresa Hake |
Tim Hartmann | Kirsten Helfrich |
Kassia Immler | Dominique Issermann |
Ruben Jodar | Christoph Jungblut |
Nadia Kevan | Alexander Kovacs |
Paul Kùx | Bettina Lareida | Simon Peter,
Angelika , Domenica, Benjamin,
Katharina, Rahel, Lilian und Valentin
Luzi-Brunner | Nina Mampel | Maria
Merz | Jasmin Mock | Gertrud und Hans
Müller | Alwine Nagel | Karl und Barbara
Naraghi | Jörg Neubig | Maike Preuss |
Heidi und Vera Reich | Aurelia Sagmeister |
Trudel und Hermann-Josef Scheidtweiler |
Peter Schmid | Astrid Sonder | Nicole
Sprecher | Karl-Theo Stammer | Gilbert
Steiner | Monika und Dominik Thommy |
Peter und Tina Truog | Mark Tschofen |
Walter Tuor | Werner und Ursula Vieli |
Claudia Voit | Olgierd Wandzioch |
Rainer Weitschies | Stephanie Wladika |
Dagmar Wolf | Angelika und Iris Zehrer |
Annalisa Zumthor

Presenting**Sponsor**

MONTFORT WERBUNG

Hausponsor des**Kunsthau**s** Bregenz**

Hypo Landesbank
Vorarlberg

Mit freundlicher
Unterstützung von



ZUMTOBEL

Sponsor der**KUB Arena**

MONTFORT WERBUNG

Kulturträger

Vorarlberg
unser Land