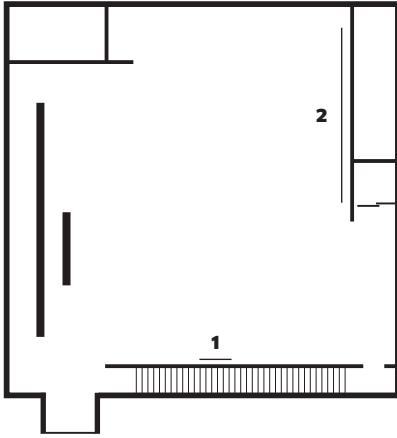


# Anne Imhof

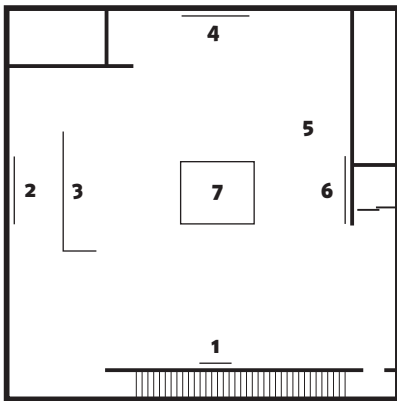
## Wish You Were Gay

08 | 06 – 22 | 09 | 2024



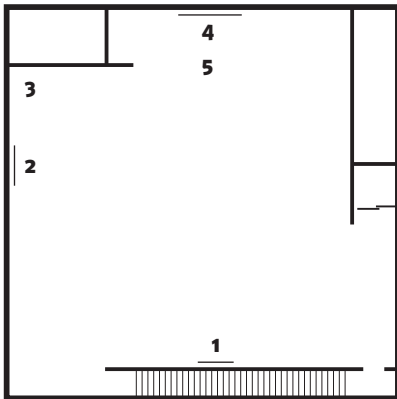
### Erdgeschoss | Ground Floor

- |  |  |
|--|--|
| <p><b>1</b> <i>Reaper</i>, 2023<br/>Bleistift auf Papier   Pencil on paper</p> | <p><b>2</b> <i>Maria</i>, 2002<br/>DV PAL Video, Farbe, Ton<br/>DV PAL video, color, sound, 10'33"</p> |
|--|--|



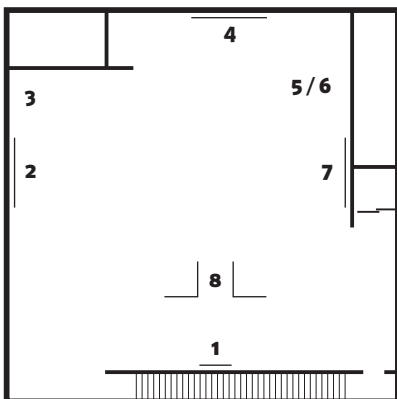
### 1. Obergeschoss | First Floor

- |  |  |
|--|--|
| <p><b>1</b> <i>Untitled (Bench II)</i>, 2024<br/>Bronze</p> <p><b>2</b> <i>Untitled (noon)</i>, 2024<br/>Öl auf Leinwand   Oil on canvas</p> <p><b>3</b> <i>Doper (Youth)</i>, 2022<br/>(Sprühlackiertes) Glas, Stahl<br/>(Spray painted) glass, steel</p> <p><b>4</b> <i>Untitled (9am)</i>, 2024<br/>Öl auf Leinwand   Oil on canvas</p> | <p><b>5</b> <i>Zebra</i>, 2002<br/>DV PAL Video, Farbe, Ton<br/>DV PAL video, color, sound, 19'3"</p> <p><b>6</b> <i>Untitled (7am)</i>, 2024<br/>Öl auf Leinwand   Oil on canvas</p> <p><b>7</b> <i>House</i>, 2024<br/>Stahl, Glas, Schaumstoff- und<br/>Lederunterlagen   Steel, glass,<br/>foam and leather mattresses</p> |
|--|--|



### 2. Obergeschoss | Second Floor

- |  |  |
|--|--|
| <p><b>1</b> <i>Untitled (Bench I)</i>, 2024<br/>Readymade</p> <p><b>2</b> <i>Untitled</i>, 2024<br/>Bronze</p> <p><b>3</b> <i>Work</i>, 2002<br/>DV PAL Video, Farbe, Ton<br/>DV PAL video, color, sound, 21'32"</p> | <p><b>4</b> <i>Wish You Were Gay III</i>, 2024<br/>Öl auf Leinwand   Oil on canvas</p> <p><b>5</b> <i>My own Private Idaho (Ducati)</i>, 2024<br/>Stahl, Glas, Ducati-Motorrad<br/>Steel, glass, Ducati motorcycle</p> |
|--|--|



### 3. Obergeschoss | Third Floor

- |  |   |
|--|---|
| <p><b>1</b> <i>Untitled</i>, 2024<br/>Bronze</p> <p><b>2</b> <i>Wish You Were Gay IV</i>, 2024<br/>Öl auf Leinwand   Oil on canvas</p> <p><b>3</b> <i>Turnpike</i>, 2003<br/>Nadine Fraczkowski, Anne Imhof<br/>DV PAL Video, Farbe, Ton<br/>DV PAL video, color, sound, 17'28"</p> <p><b>4</b> <i>Wish You Were Gay I</i>, 2024<br/>Öl auf Leinwand   Oil on canvas</p> | <p><b>5</b> <i>Misfits</i>, 2003<br/>DV PAL Video, Farbe, Ton<br/>DV PAL video, color, sound, 15'51"</p> <p><b>6</b> <i>Bash</i>, 2002<br/>DV PAL Video, Farbe, Ton<br/>DV PAL video, color, sound, 4'39"</p> <p><b>7</b> <i>Wish You Were Gay II</i>, 2024<br/>Öl auf Leinwand   Oil on canvas</p> <p><b>8</b> <i>Schleuse</i>, 2024<br/>Stahl   Steel</p> |
|--|---|

**Besonderer Dank an | Special thanks to** Anne Imhof, Andrea Faraguna, Joie Iacono, Michael Lasch, Kajana Wagner, Daniel Buchholz, Philomene Magers, Christopher Müller, Monika Sprüth

**Zusätzlicher Dank an | Additional thanks to** Nicolò Bacciolo, Linus Beckmann, Peter Currie, Marie-Sophie Dorsch, Julia Dubsky, Jakob Eilinghoff, Luis Einhauser, Jan Fürst, Franziska von Hasselbach, Michael Kaul, Simon Kellermann, Tibor Koehne, Shuei Komatsu, Joji Koyama, Peer Kulenkamp, Felix Lehner, Mara Meerwein, Margherita Mezzetti, Felix Müller, Hermann Noack, Seth Pick, Belle Place, Hannah Rettl, Helena Spiekermann, Sofia Stepanova, Levi Strasser, Joshua Tewes-McCoy, Freddy Vetter, Filippo Weck, Dirk Weber, Claire Wildenhuis, Gonzalo Ruelas Woodrow, Juliane Zeller

**Alle Arbeiten | All works** Courtesy of the artist, Galerie Buchholz, Sprüth Magers